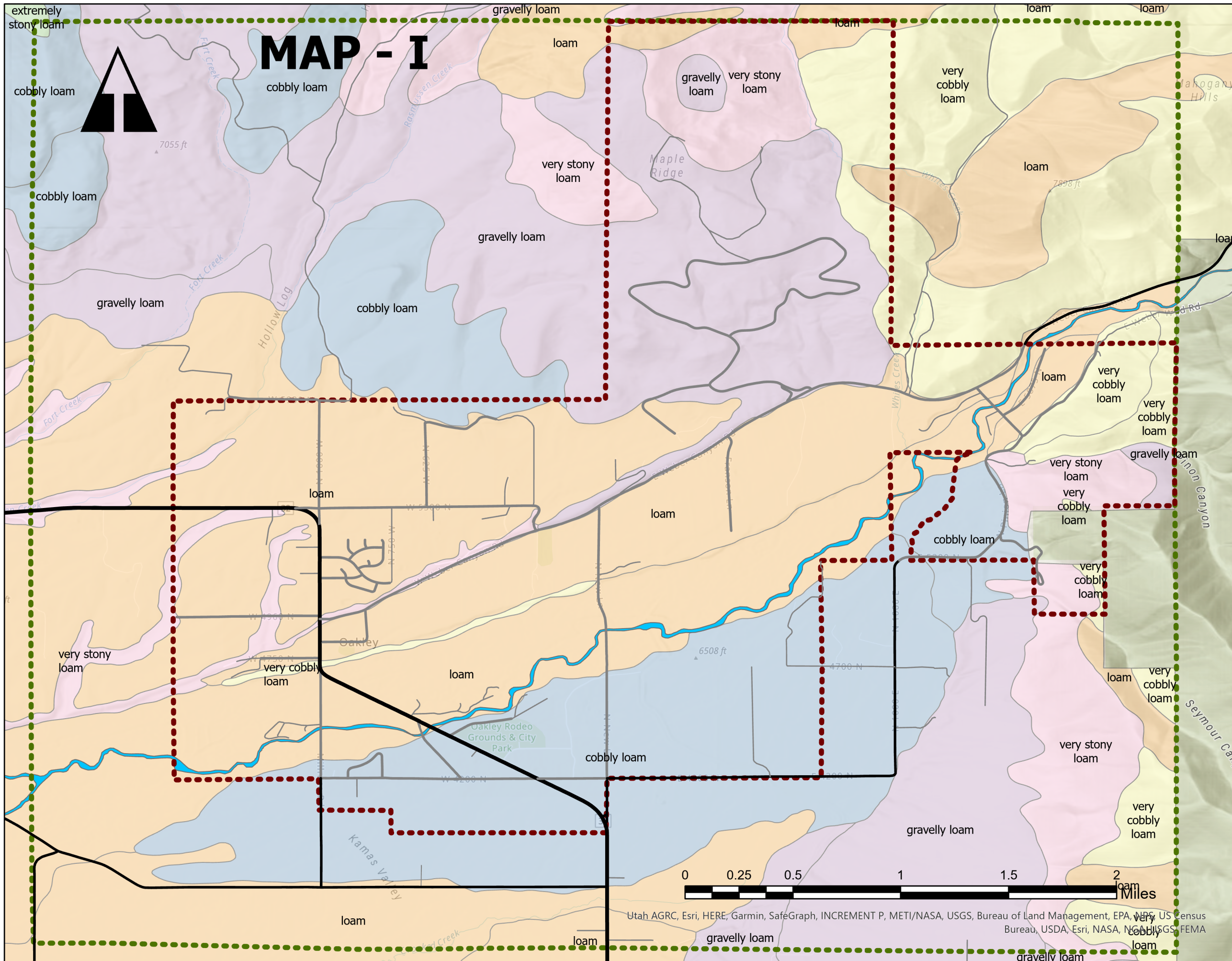


The General Plan Maps of **Oakley City**

Soil Types

The Maps Which Define
Oakley's Geography and
Guide Future Planning



Roads

- Private
- A
- B
- C
- Municipal Boundaries
- Annexation Declaration
- Weber River

Soils

- Null
- cobbly loam
- extremely stony loam
- gravelly loam
- loam
- very cobbly loam
- very gravelly loam
- very stony loam

NOTE: All information and data on this map is for planning purposes and may be subject to field or source verification by Oakley City in actual project reviews.



Utah AGRC, Esri, HERE, Garmin, SafeGraph, INCREMENT P, METI/NASA, USGS, Bureau of Land Management, EPA, NPS, US Census Bureau, USDA, Esri, NASA, NOAA/USGS, FEMA