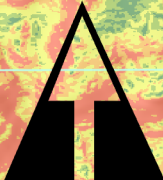


MAP - G



The General Plan Maps of **Oakley City**

Land Slope

The Maps Which Define
Oakley's Geography and
Guide Future Planning

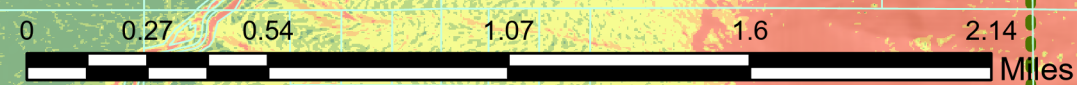
Roads

- Private
- A
- B
- C

- Parcels
- ⋯ Municipal Boundaries
- ⋯ Annexation Declaration
- ▬ Weber River
- Lakes

Slope in Percent %

- Value
- 0.000001 - 5
 - 5.000001 - 10
 - 10.000001 - 20
 - 20.000001 - 30
 - 30.000001 - 40



Esri, NASA, NGA, USGS, FEMA

NOTE: All information and data on this map is for planning purposes and may be subject to field or source verification by Oakley City in actual project reviews.